

# SOYBEANS

**GH00833E3** BRAND

RM:  
0.08



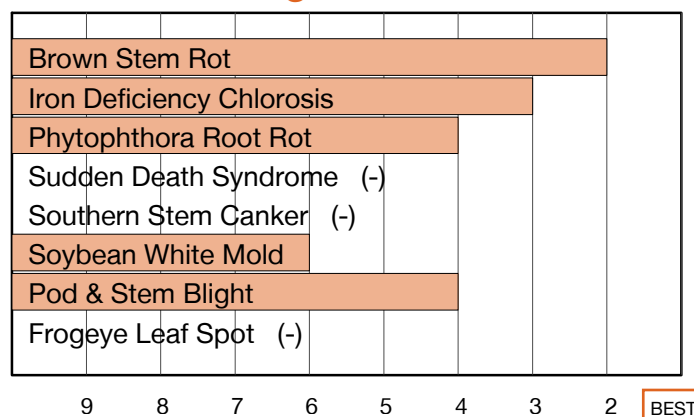
## EARLY VARIETY WITH SOYBEAN CYST NEMATODE RESISTANCE

- Strong performance in high-yield environments
- Solid stress tolerance
- Very good tolerance to Iron Deficiency Chlorosis

### Plant Characteristics

Plant Height	<b>Medium</b>
Canopy/Plant Type	<b>Medium-Thin</b>
Branching	<b>Prolific</b>
Growth Habit	<b>Indeterminate</b>
Flower Color	<b>Purple</b>
Pubescence Color	<b>Gray</b>
Pod Color	<b>Brown</b>
Hilum Color	<b>Buff</b>
Chloride Sensitivity	-

### Disease Ratings



### Agronomic Traits

Emergence	<b>3</b>
Standability	<b>4</b>
Shatter Tolerance	-
Green Stem	-
Estimated Seed Size	<b>Medium</b>
% Protein at 13% mst.	<b>33.7</b>
% Oil at 13% mst.	<b>18.8</b>
Narrow Rows	<b>1</b>
Wide Rows	<b>2</b>

### Adaptation to Soil Types

Drought Prone	<b>Best</b>
High pH*	<b>Good</b>
Highly Productive	<b>Best</b>
Moderate/Variable Environments	<b>Best</b>
Poorly Drained	<b>Good</b>

### Diseases and Pests

Phytophthora Root Rot (PRR) Source	<b>Rps1a</b>
Soybean Cyst Nematode (SCN) Races	<b>MR3</b>
(SCN) Source	<b>PI88788</b>
Root Knot Nematode (RKN) Incognita	-

For more info or to view product performance data: [www.goldenharvestseeds.com](http://www.goldenharvestseeds.com) (800) 944-7333



Ratings are based on interpretation of data gathered by Syngenta and/or observations across areas of adaptation and may change as additional data are gathered. Product performance assumes disease presence.

©2021 Syngenta. Important: Always read and follow label and bag tag instructions; only those labeled as tolerant to glufosinate may be sprayed with glufosinate ammonium-based herbicides. Golden Harvest® Soybean varieties are protected under granted or pending U.S. variety patents and other intellectual property rights, regardless of the trait(s) within the seed. The ENLIST E3® trait may be protected under numerous United States patents. It is unlawful to save soybeans containing this trait for planting or transfer to others for use as a planting seed. Only 2,4-D choline formulations with Colex-D® Technology are approved for use with ENLIST E3® soybeans. ENLIST E3® soybean technology is jointly developed with Dow AgroSciences LLC and MS Technologies LLC. The ENLIST trait and ENLIST Weed Control System are technologies owned and developed by Dow AgroSciences LLC. ENLIST® and ENLIST E3® are trademarks of Dow AgroSciences LLC. LibertyLink®, Liberty® and the Water Droplet logo are registered trademarks of BASF. The trademarks or service marks displayed or otherwise used herein are the property of a Syngenta Group Company. All other trademarks are the property of their respective owners.

1-9 Scale: 1 = Best, 9 = Worst, (-) = Not Available, NA = Not Applicable.

Adaptation to Soil Types: Best > Good > Fair > Poor; (-) = Not Available.

\* Represents an assessment of stand establishment, chlorosis severity and yield performance

Published May 04, 2021. For use until April 30, 2022.



Seed products with the LibertyLink® (LL) trait are resistant to the herbicide glufosinate ammonium, an alternative to glyphosate in corn and soybeans, and combine high-yielding genetics with the powerful, non-selective, postemergent weed control of Liberty® herbicide for optimum yield and excellent weed control.