

GH2406XF BRAND

RM:
2.4

Racehorse Performance with Workhorse Versatility

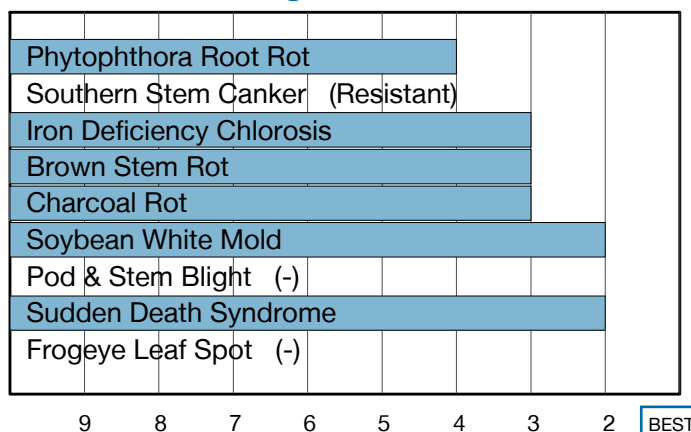


- Excellent performance on poorly drained soils
- Consistent yield potential under drought stress, with White Mold tolerance for high yield environments
- Great performance across yield levels with good Northern movement

Plant Characteristics

Plant Height	Medium-Tall
Canopy/Plant Type	Medium-Thin
Branching	Moderate
Growth Habit	Indeterminate
Flower Color	White
Pubescence Color	Light Tawny
Pod Color	Brown
Hilum Color	Black
Chloride Sensitivity	Includer

Disease Ratings



Agronomic Traits

Emergence	2
Standability	3
Shatter Tolerance	2
Green Stem	3
Estimated Seed Size	Medium
% Protein at 13% mst.	36.3
% Oil at 13% mst.	19.8
Narrow Rows	Best
Wide Rows	Good
Metribuzin Response	-
Sulfentrazone Response	-

Diseases and Pests

Phytophthora Root Rot (PRR) Source	Rps1c
Soybean Cyst Nematode (SCN) Races	MR3
(SCN) Source	PI88788
Root Knot Nematode (RKN) Incognita	-

Adaptation to Soil Types

Drought Prone	Best
High pH*	Good
Highly Productive	Best
Moderate/Variable Environments	Best
Poorly Drained	Best

For more info or to view product performance data: goldenharvestseeds.com 1-800-944-7333

1-9 Scale: 1 = Best, 9 = Worst, (-) = Not Available, NA = Not Applicable.

Adaptation and Responses: Best > Good > Fair > Poor.

R = Resistant, S = Susceptible.

* Represents an assessment of stand establishment, chlorosis severity and yield performance.

Ratings are based on interpretation of statistically analyzed results of studies conducted by Syngenta and may change as additional data are gathered.

© 2026 Syngenta. Important: Always read and follow label and bag tag instructions; only those labeled as tolerant to glufosinate may be sprayed with glufosinate ammonium-based herbicides. No dicamba may be used in-crop with seed with Roundup Ready 2 Xtend® Technology, unless and until approved or specifically permitted, and no dicamba formulations are currently registered for such use at the time this material was published. Please see roundupreadyxtend.com/pages/xtendflex-updates.aspx for status updates. See product labels for details and tank mix partners. Golden Harvest® soybean varieties are protected under granted or pending U.S. variety patents and other intellectual property rights, regardless of the trait(s) within the seed. The LibertyLink® and XtendFlex® traits may be protected under numerous United States patents. It is unlawful to save soybeans containing these traits for planting or transfer to others for use as a planting seed. NOT ALL formulations of dicamba, glyphosate or glufosinate are approved for in-crop use with products with XtendFlex® Technology. ONLY USE FORMULATIONS THAT ARE SPECIFICALLY LABELED FOR SUCH USES AND APPROVED FOR SUCH USE IN THE STATE OF APPLICATION. Contact the U.S. EPA and your state pesticide regulatory agency with any questions about the approval status of dicamba herbicide products for in-crop use with products with XtendFlex® Technology. XtendFlex® is a registered trademark used under license from the Bayer Group. LibertyLink®, Liberty® and the Water Droplet logo are registered trademarks of BASF. Trademarks are the property of their respective owners.

LIBERTY LINK Seed products with the LibertyLink® (LL) trait are resistant to the herbicide glufosinate ammonium, an alternative to glyphosate in corn and soybeans, and combine high-yielding genetics with the powerful, non-selective, postemergent weed control of Liberty® herbicide for optimum yield and excellent weed control.