

# SOYBEANS



## GH3023XF<sub>BRAND</sub>



RM:  
3.0

### Awesome Performance with Rock Solid Agronomics

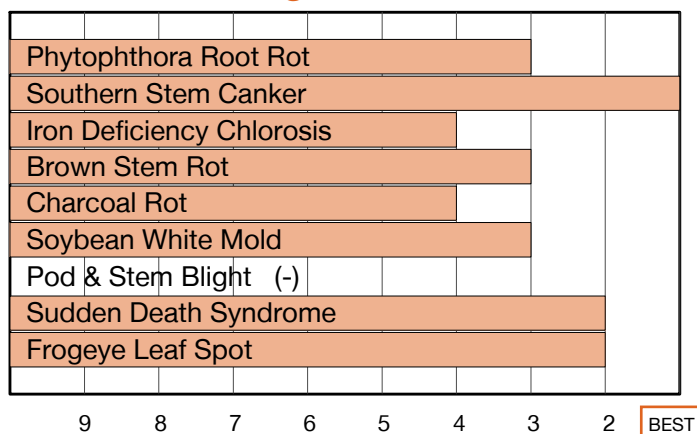


- Maximizes yield potential in any environment
- Broadly adapted while excelling on productive and well managed farms
- Great choice to move South of zone

## Plant Characteristics

|                      |               |
|----------------------|---------------|
| Plant Height         | Medium        |
| Canopy/Plant Type    | Medium        |
| Branching            | Moderate      |
| Growth Habit         | Indeterminate |
| Flower Color         | White         |
| Pubescence Color     | Light Tawny   |
| Pod Color            | Brown         |
| Hilum Color          | Black         |
| Chloride Sensitivity | Includer      |

## Disease Ratings



## Agronomic Traits

|                        |        |
|------------------------|--------|
| Emergence              | 2      |
| Standability           | 2      |
| Shatter Tolerance      | 2      |
| Green Stem             | 3      |
| Estimated Seed Size    | Medium |
| % Protein at 13% mst.  | 34.5   |
| % Oil at 13% mst.      | 19.2   |
| Narrow Rows            | 1      |
| Wide Rows              | 1      |
| Metribuzin Response    | -      |
| Sulfentrazone Response | -      |

## Adaptation to Soil Types

|                                |      |
|--------------------------------|------|
| Drought Prone                  | Best |
| High pH*                       | Fair |
| Highly Productive              | Best |
| Moderate/Variable Environments | Best |
| Poorly Drained                 | Best |

## Diseases and Pests

|                                    |         |
|------------------------------------|---------|
| Phytophthora Root Rot (PRR) Source | Rps1c   |
| Soybean Cyst Nematode (SCN) Races  | R3      |
| (SCN) Source                       | PI88788 |
| Root Knot Nematode (RKN) Incognita | -       |

For more info or to view product performance data: [goldenharvestseeds.com](https://goldenharvestseeds.com) (800) 944-7333

1-9 Scale: 1 = Best, 9 = Worst, (-) = Not Available.

Adaptation and Responses: Best > Good > Fair > Poor.

\* Represents an assessment of stand establishment, chlorosis severity and yield performance

Ratings are based on interpretation of statistically analyzed results of studies conducted by Syngenta and may change as additional data are gathered.

© 2023 Syngenta. Under federal and local laws, only dicamba-containing herbicides registered for use on dicamba-tolerant varieties may be applied. See product labels for details and tank mix partners. Golden Harvest® soybean varieties are protected under granted or pending U.S. variety patents and other intellectual property rights, regardless of the trait(s) within the seed. The LibertyLink® and XtendFlex® traits may be protected under numerous United States patents. It is unlawful to save soybeans containing these traits for planting or transfer to others for use as a planting seed. Only dicamba formulations that employ VaporGrip® Technology are approved for use with XtendFlex® soybeans. LibertyLink®, Liberty® and the Water Droplet logo are registered trademarks of BASF. XtendFlex® is a registered trademark used under license from the Bayer Group. Trademarks are the property of their respective owners.



Seed products with the LibertyLink® (LL) trait are resistant to the herbicide glufosinate ammonium, an alternative to glyphosate in corn and soybeans, and combine high-yielding genetics with the powerful, non-selective, postemergent weed control of Liberty® herbicide for optimum yield and excellent weed control.