

# SOYBEANS



**GH3994E3<sub>BRAND</sub>**



**NEW**

RM:  
**3.9**



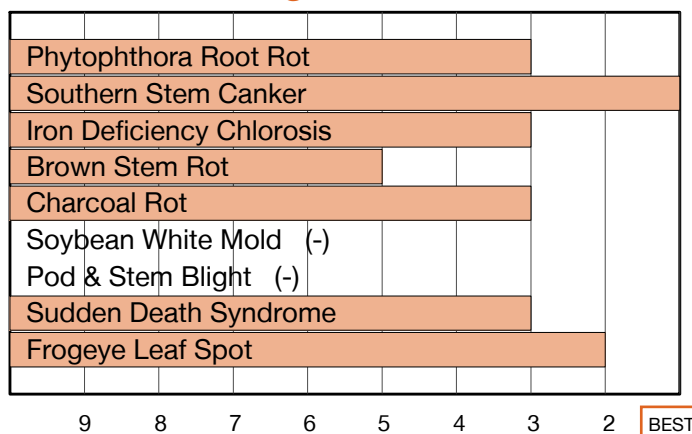
## Broadly Adapted with Great Performance Across the MG 3 Market

- Solid disease package to protect bushels all season long
- Well suited for placement on any soil type
- Stable performance when pushed South of zone

### Plant Characteristics

Plant Height	<b>Medium-Tall</b>
Canopy/Plant Type	<b>Medium-Thin</b>
Branching	<b>Moderate</b>
Growth Habit	<b>Indeterminate</b>
Flower Color	<b>Purple</b>
Pubescence Color	<b>Gray</b>
Pod Color	<b>Tan</b>
Hilum Color	<b>Buff</b>
Chloride Sensitivity	<b>Excluder</b>

### Disease Ratings



### Agronomic Traits

Emergence	<b>2</b>
Standability	<b>2</b>
Shatter Tolerance	<b>2</b>
Green Stem	<b>2</b>
Estimated Seed Size	<b>Large</b>
% Protein at 13% mst.	<b>34.4</b>
% Oil at 13% mst.	<b>19.6</b>
Narrow Rows	<b>1</b>
Wide Rows	<b>2</b>
Metribuzin Response	-
Sulfentrazone Response	-

### Adaptation to Soil Types

Drought Prone	<b>Good</b>
High pH*	<b>Good</b>
Highly Productive	<b>Best</b>
Moderate/Variable Environments	<b>Best</b>
Poorly Drained	<b>Best</b>

### Diseases and Pests

Phytophthora Root Rot (PRR) Source	<b>Rps1c</b>
Soybean Cyst Nematode (SCN) Races	<b>MR3, MR14</b>
(SCN) Source	<b>PI88788</b>
Root Knot Nematode (RKN) Incognita	-

For more info or to view product performance data: [goldenharvestseeds.com](https://goldenharvestseeds.com) (800) 944-7333

1-9 Scale: 1 = Best, 9 = Worst, (-) = Not Available.

Adaptation and Responses: Best > Good > Fair > Poor.

\* Represents an assessment of stand establishment, chlorosis severity and yield performance

Ratings are based on interpretation of statistically analyzed results of studies conducted by Syngenta and may change as additional data are gathered.

© 2023 Syngenta. Golden Harvest® soybean varieties are protected under granted or pending U.S. variety patents and other intellectual property rights, regardless of the trait(s) within the seed. The ENLIST E3® soybean and LibertyLink® traits may be protected under numerous United States patents. It is unlawful to save soybeans containing these traits for planting or transfer to others for use as a planting seed. Only 2,4-D choline formulations with Colex-D® Technology are approved for use with ENLIST E3® soybeans. ENLIST E3® soybean technology is jointly developed with Corteva Agriscience LLC and MS Technologies LLC. The ENLIST trait and ENLIST Weed Control System are technologies owned and developed by Corteva Agriscience LLC. ENLIST® and ENLIST E3® are registered trademarks of Corteva Agriscience LLC. LibertyLink®, Liberty® and the Water Droplet logo are registered trademarks of BASF. Trademarks are the property of their respective owners.



Seed products with the LibertyLink® (LL) trait are resistant to the herbicide glufosinate ammonium, an alternative to glyphosate in corn and soybeans, and combine high-yielding genetics with the powerful, non-selective, postemergent weed control of Liberty® herbicide for optimum yield and excellent weed control.