

# SOYBEANS

NK35-J6E3S<sub>BRAND</sub>



NEW

RM:  
3.5



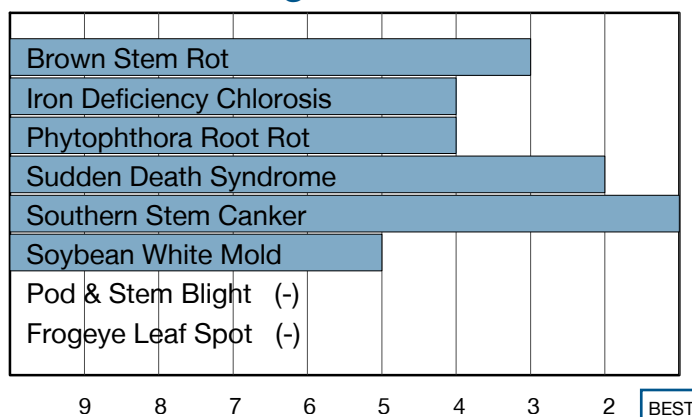
## EXCITING PERFORMANCE AT ANY YIELD LEVEL

- Superb Sudden Death Syndrome tolerance
- Rugged plant type excels on variable soils
- STS tolerance for added placement options

## Plant Characteristics

Plant Height	Medium-Tall
Canopy/Plant Type	Medium-Bush
Branching	Moderate
Growth Habit	Indeterminate
Flower Color	Purple
Pubescence Color	Gray
Pod Color	Tan
Hilum Color	Imperfect Black
Chloride Sensitivity	Includer

## Disease Ratings



## Agronomic Traits

Emergence	2
Standability	4
Shatter Tolerance	2
Green Stem	3
Estimated Seed Size	Medium
% Protein at 13% mst.	32.1
% Oil at 13% mst.	19.8
Narrow Rows	3
Wide Rows	1

## Adaptation to Soil Types

Drought Prone	Best
High pH*	Fair
Highly Productive	Best
Moderate/Variable Environments	Best
Poorly Drained	Good

## Diseases and Pests

Phytophthora Root Rot (PRR) Source	Rps1c
Soybean Cyst Nematode (SCN) Races	MR3
(SCN) Source	PI88788
Root Knot Nematode (RKN) Incognita	-

For more information or to view product performance data: [www.nksoybeans.com](http://www.nksoybeans.com) [www.nkfieldforged.com](http://www.nkfieldforged.com) (800) 258-0521



syngenta.

Ratings are based on interpretation of data gathered by Syngenta and/or observations across areas of adaptation and may change as additional data are gathered. Product performance assumes disease presence.

©2021 Syngenta. Important: Always read and follow label and bag tag instructions; only those labeled as tolerant to glufosinate may be sprayed with glufosinate ammonium-based herbicides. NK® Soybean varieties are protected under granted or pending U.S. variety patents and other intellectual property rights, regardless of the trait(s) within the seed. The ENLIST E3® trait may be protected under numerous United States patents. It is unlawful to save soybeans containing this trait for planting or transfer to others for use as a planting seed. Only 2,4-D choline formulations with Colex-D® Technology are approved for use with ENLIST E3® soybeans. ENLIST E3® soybean technology is jointly developed with Dow AgroSciences LLC and MS Technologies LLC. The ENLIST trait and ENLIST Weed Control System are technologies owned and developed by Dow AgroSciences LLC. ENLIST® and ENLIST E3® are trademarks of Dow AgroSciences LLC. LibertyLink®, Liberty® and the Water Droplet logo are registered trademarks of BASF. STS® is a registered trademark of DuPont. The trademarks or service marks displayed or otherwise used herein are the property of a Syngenta Group Company. All other trademarks are the property of their respective owners.

1-9 Scale: 1 = Best, 9 = Worst, (-) = Not Available, NA = Not Applicable.

Adaptation to Soil Types: Best > Good > Fair > Poor; (-) = Not Available.

\* Represents an assessment of stand establishment, chlorosis severity and yield performance

Published May 04, 2021. For use until April 30, 2022.



Seed products with the LibertyLink® (LL) trait are resistant to the herbicide glufosinate ammonium, an alternative to glyphosate in corn and soybeans, and combine high-yielding genetics with the powerful, non-selective, postemergent weed control of Liberty® herbicide for optimum yield and excellent weed control.