

# SOYBEANS

**S27-LLGT27** BRAND

RM:  
2.7



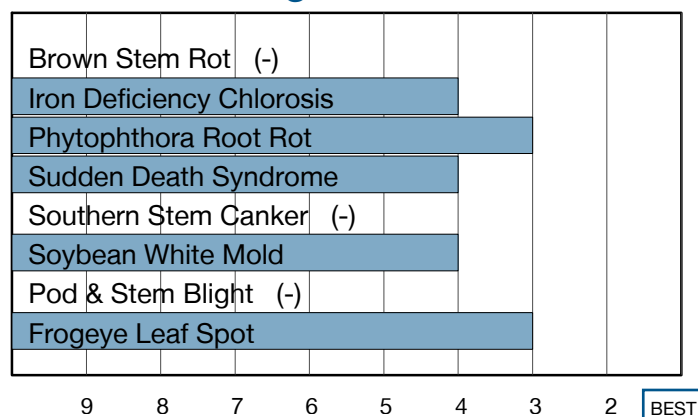
## PERFORMS IN BOTH HIGH-YIELDING AND STRESS ENVIRONMENTS

- Maintains plant height very well
- Above-average Sudden Death Syndrome tolerance
- Satisfactory Iron Deficiency Chlorosis tolerance

### Plant Characteristics

Plant Height	<b>Medium</b>
Canopy/Plant Type	<b>Medium-Bush</b>
Branching	<b>Moderate</b>
Growth Habit	<b>Indeterminate</b>
Flower Color	<b>Purple</b>
Pubescence Color	<b>Light Tawny</b>
Pod Color	<b>Tan</b>
Hilum Color	<b>Brown</b>
Chloride Sensitivity	<b>Includer</b>

### Disease Ratings



### Agronomic Traits

Emergence	<b>2</b>
Standability	<b>3</b>
Shatter Tolerance	<b>2</b>
Green Stem	<b>2</b>
Estimated Seed Size	<b>Large</b>
% Protein at 13% mst.	<b>36.0</b>
% Oil at 13% mst.	<b>20.2</b>
Narrow Rows	<b>2</b>
Wide Rows	<b>1</b>

### Adaptation to Soil Types

Drought Prone	<b>Best</b>
High pH*	<b>Fair</b>
Highly Productive	<b>Best</b>
Moderate/Variable Environments	<b>Best</b>
Poorly Drained	<b>Best</b>

### Diseases and Pests

Phytophthora Root Rot (PRR) Source	<b>S</b>
Soybean Cyst Nematode (SCN) Races	<b>MR3</b>
(SCN) Source	<b>PI88788</b>
Root Knot Nematode (RKN) Incognita	<b>-</b>

For more information or to view product performance data: [www.nksoybeans.com](http://www.nksoybeans.com) [www.nkfieldforged.com](http://www.nkfieldforged.com) (800) 258-0521



syngenta.

Ratings are based on interpretation of data gathered by Syngenta and/or observations across areas of adaptation and may change as additional data are gathered. Product performance assumes disease presence.

©2021 Syngenta. Important: Always read and follow label and bag tag instructions; only those labeled as tolerant to glufosinate may be sprayed with glufosinate ammonium-based herbicides. NK® Soybean varieties are protected under granted or pending U.S. variety patents and other intellectual property rights, regardless of the trait(s) within the seed. The GT27® and LibertyLink® traits may be protected under numerous United States patents. It is unlawful to save soybeans containing these traits for planting or transfer to others for use as a planting seed. LibertyLink®, Liberty® and the Water Droplet logo are registered trademarks of BASF. GT27® is a registered trademark of M.S. Technologies and BASF. The trademarks or service marks displayed or otherwise used herein are the property of a Syngenta Group Company. All other trademarks are the property of their respective owners.

1-9 Scale: 1 = Best, 9 = Worst, (-) = Not Available, NA = Not Applicable.

Adaptation to Soil Types: Best > Good > Fair > Poor; (-) = Not Available.

\* Represents an assessment of stand establishment, chlorosis severity and yield performance

Published May 04, 2021. For use until April 30, 2022.



Seed products with the LibertyLink® (LL) trait are resistant to the herbicide glufosinate ammonium, an alternative to glyphosate in corn and soybeans, and combine high-yielding genetics with the powerful, non-selective, postemergent weed control of Liberty® herbicide for optimum yield and excellent weed control.